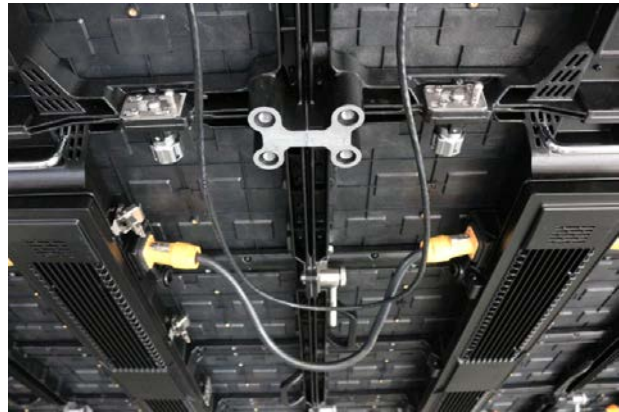
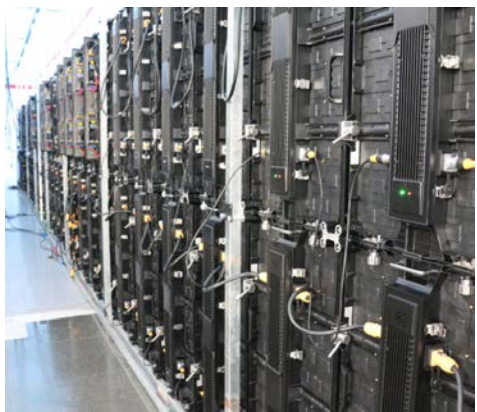


HIGH END EVENT RENTAL LED DISPLAY SERIES



P4.81 outdoor Rental LED Display

LED Type	SMD2727
Pixel Pitch(mm)	4.81
Physical Density(dot/m ²)	43264
Module Resolution (dot)	64×64
Module Size(mm)	250 (W) ×250 (H)
Module weight(kg)	0.72
Module max. Power consumption(W)	45
Module configuration(pcs)	2×2/2×4
Cabinet resolution(dot)	128×128/128×256
Cabinet size(mm)	500 (W) ×500/1000 (H) ×75 (D)
Cabinet area(m ²)	0.25/0.5
Cabinet weight(kg)	8.2/14.9
Cabinet flatness(mm)	≤0.2
Maintenance	Rear
Cabinet material	Die-casting aluminum
Brightness calibration	support
Chromaticity calibration	support
Brightness(nits)	≥4500 (6500K)
Color temperature	3200—9300(adjustable)
View angle (H/V °)	160/140
Brightness/Chromaticity uniformity	≥97%
Contrast Ratio	4000: 1
Max power consumption(W/m ²)	800
Average power consumption(W/m ²)	250
Power requirements	AC90~264V, frequency 47-63 (Hz)
Frame Frequency(Hz)	50&60
Driving method	Constant drive, 1/13scan
Gray level	65536
Refresh rate (Hz)	≥1920
Color processing bits	14bit
Video	2K,HD, 4K HD
Working Temperature/ Humidity (°C/RH)	-20 – 60 / 10%-85%RH
Stock Temperature/Humidity (°C/RH)	-20 – 60 / 10%-85%RH
Standard	CCC, TUV-CE, ETL

P3.91 Outdoor rental LED display

LED Type	SMD1921
Pixel Pitch(mm)	P3.91
Physical Density(dot/m ²)	65746
Module Resolution (dot)	64(W)x64(H)
Module Size(mm)	250(W)×250(H)
Module weight(kg)	0.72
Module max. Power consumption(W)	45
Module configuration(pcs)	2(W)x2(H)
Cabinet resolution(dot)	128(W)x128(H)
Cabinet size(mm)	500 (W) ×500/1000 (H) ×75 (D)
Cabinet area(m ²)	0.25
Cabinet weight(kg)	8.2
Cabinet flatness(mm)	≤0.2
Maintenance	Rear
Cabinet material	Die-casting aluminum
Brightness calibration	support
Chromaticity calibration	support
Brightness	≥3500(6500k)
Color temperature	3200-9300 (adjustable)
View angle (H/V °)	160/140
Brightness/Chromaticity uniformity	≥97%
Contrast Ratio	4000: 1
Max power consumption(W/m ²)	800
Average power consumption(W/m ²)	250
Power requirements	AC90~264V, frequency 47-63 (Hz)
Frame Frequency	50&60
Driving method	Constant drive, 1/16 scan
Gray level	65536
Refresh rate (Hz)	1920
Color processing bits	14bit
Video	2K,HD, 4K HD
Working Temperature/ Humidity	-20 – 60 / 10%-85%RH
Stock Temperature/Humidity	-20 – 60 / 10%-85%RH
Standard	CCC, TUV-CE, ETL

P4.81 indoor Rental LED Display

LED Type	SMD2121
Pixel Pitch(mm)	4.81
Physical Density(dot/m ²)	43264
Module Resolution (dot)	64×64
Module Size(mm)	250 (W) ×250 (H)
Module weight(kg)	0.72
Module max. Power consumption(W)	45
Module configuration(pcs)	2×2/2×4
Cabinet resolution(dot)	128×128/128×256
Cabinet size(mm)	500 (W) ×500/1000 (H) ×75 (D)
Cabinet area(m ²)	0.25/0.5
Cabinet weight(kg)	8.2/14.9
Cabinet flatness(mm)	≤0.2
Maintenance	Rear
Cabinet material	Die-casting aluminum
Brightness calibration	support
Chromaticity calibration	support
Brightness(nits)	≥800 (6500K)
Color temperature	3200—9300(adjustable)
View angle (H/V °)	160/140
Brightness/Chromaticity uniformity	≥97%
Contrast Ratio	4000: 1
Max power consumption(W/m ²)	800
Average power consumption(W/m ²)	250
Power requirements	AC90~264V, frequency 47-63 (Hz)
Frame Frequency(Hz)	50&60
Driving method	Constant drive, 1/13scan
Gray level	65536
Refresh rate (Hz)	≥1920
Color processing bits	14bit
Video	2K,HD, 4K HD
Working Temperature/ Humidity (°C/RH)	-20 – 60 / 10%-85%RH
Stock Temperature/Humidity (°C/RH)	-20 – 60 / 10%-85%RH
Standard	CCC, TUV-CE, ETL

P3.91 Outdoor rental LED display

LED Type	SMD2121
Pixel Pitch(mm)	P3.91
Physical Density(dot/m ²)	65746
Module Resolution (dot)	64(W)x64(H)
Module Size(mm)	250(W)×250(H)
Module weight(kg)	0.72
Module max. Power consumption(W)	45
Module configuration(pcs)	2(W)x2(H)
Cabinet resolution(dot)	128(W)x128(H)
Cabinet size(mm)	500 (W) ×500/1000 (H) ×75 (D)
Cabinet area(m ²)	0.25
Cabinet weight(kg)	8.2
Cabinet flatness(mm)	≤0.2
Maintenance	Rear
Cabinet material	Die-casting aluminum
Brightness calibration	support
Chromaticity calibration	support
Brightness	≥800(6500k)
Color temperature	3200-9300 (adjustable)
View angle (H/V °)	160/140
Brightness/Chromaticity uniformity	≥97%
Contrast Ratio	4000: 1
Max power consumption(W/m ²)	800
Average power consumption(W/m ²)	250
Power requirements	AC90~264V, frequency 47-63 (Hz)
Frame Frequency	50&60
Driving method	Constant drive, 1/16 scan
Gray level	65536
Refresh rate (Hz)	1920
Color processing bits	14bit
Video	2K,HD, 4K HD
Working Temperature/ Humidity	-20 – 60 / 10%-85%RH
Stock Temperature/Humidity	-20 – 60 / 10%-85%RH
Standard	CCC, TUV-CE, ETL

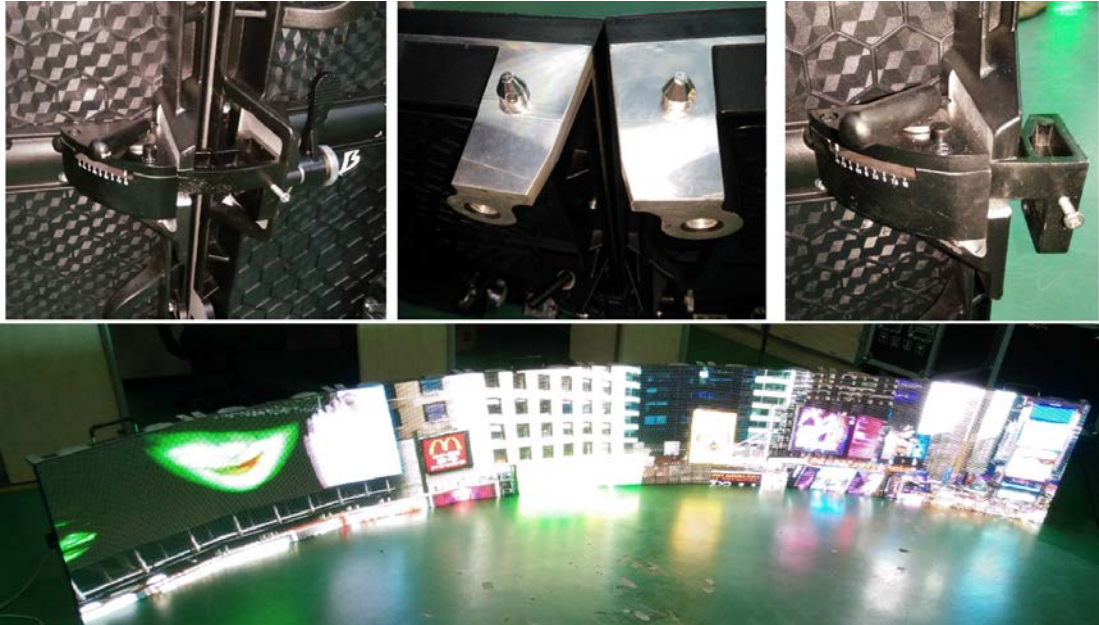
Reference price:

P3.91 indoor 500*1000mm cabinet: 1200usd/sqm

P3.91 outdoor 500*1000mm cabinet: 1600usd/sqm

P4.81 indoor 500*1000mm cabinet: 1100usd/sqm

P4.81 outdoor 500*1000mm cabinet: 1300usd/sqm



For curved rental cabinet, each sqm add 100usd.

Above price includes flight cases, novastar receiving card, 110-220V wide range power supply.

For all the product designs, if use 500*500mm cabinet, each sqm add 100usd.